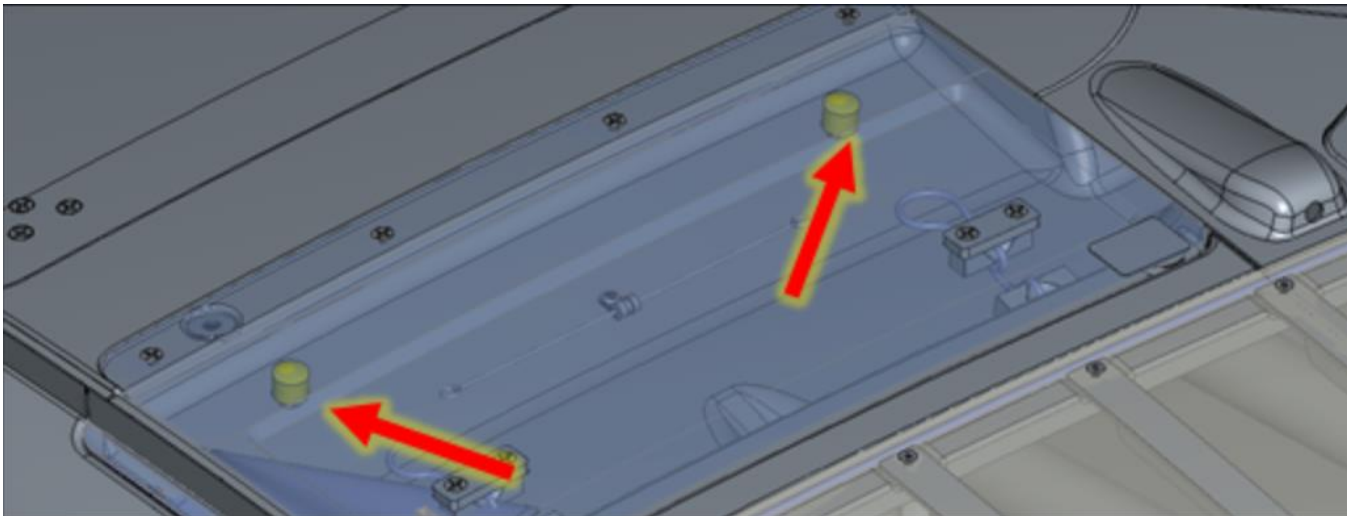


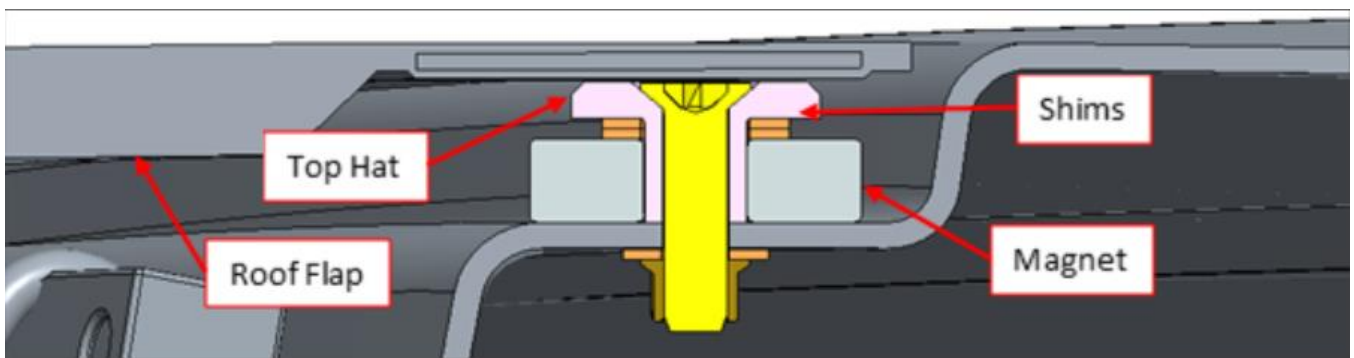
ROOF/DIFFUSER FLAP INSTRUCTIONS

Roof Flaps

The leading edge of the roof flaps should be supported by the bumpers shown in yellow in the image below. Shims or washers must be used to adjust the height of the bumpers.

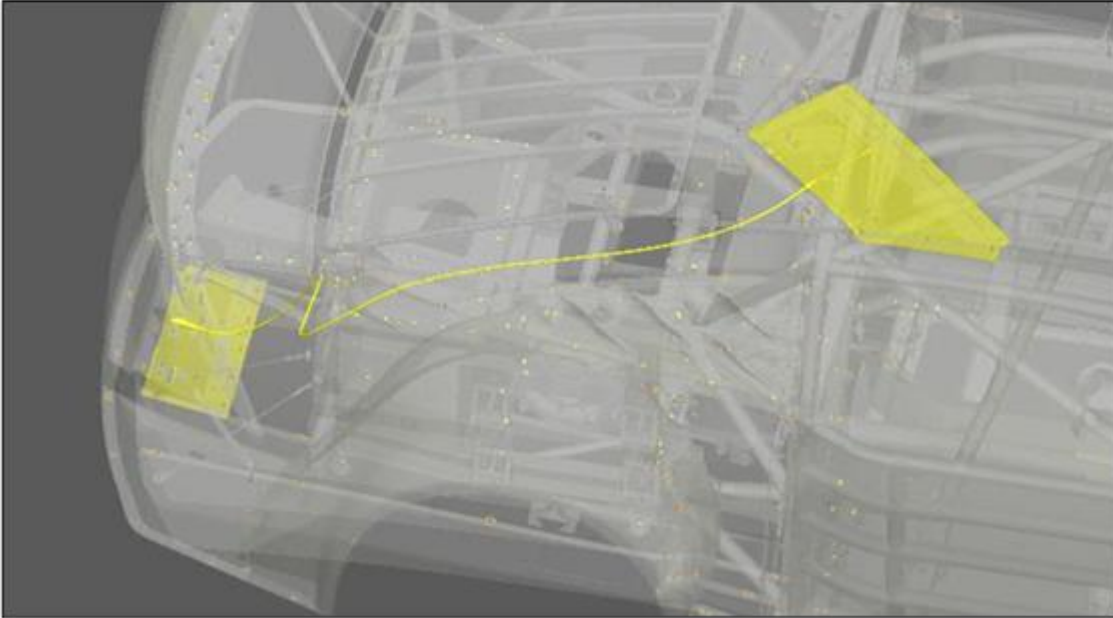


The roof flaps are held closed by ring magnets retained by top hats. The position of the ring magnet may be changed by adjusting the shims or washers. The retention force of the roof flaps should be set per the Rule Book requirements. Note that the hood flaps use the same top hat and shim system but require a high temperature tolerant magnet – ELET60977.

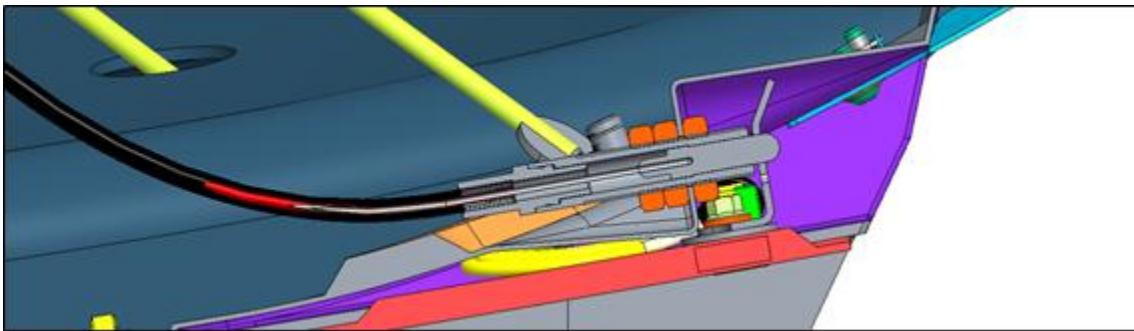


Diffuser Flap System

The diffuser flap is retained by a cable and latch system connected to the right-hand roof flap. When the right-hand roof flap opens it pulls the cable and releases the diffuser flap.

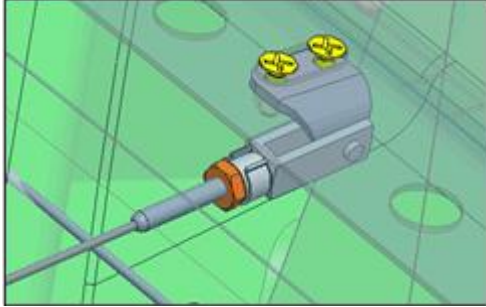


For the proper operation of the system it is critical the cable is adjusted correctly. The diffuser end of the cable should be installed and adjusted as shown in the image below. Note that double jam nuts must be used on the front side of the diffuser to allow the diffuser to be removed without affecting the latch adjustment. The thickness of the shim under the strike plate must be adjusted to ensure the diffuser flap lightly contacts the diffuser.



The roof flap end of the cable must be installed as shown in the images below. The cable housing end must be adjusted so when the right-hand roof flap is opened, the diffuser flap is released. Ensure the cable does not run out of travel before the roof flap is fully open. Note that the hinge is flexible and when the roof flap is deployed on track the hinge will deflect increasing the cable travel.

Cable End at Roof Flap



Cable Housing End at Roof Flap

